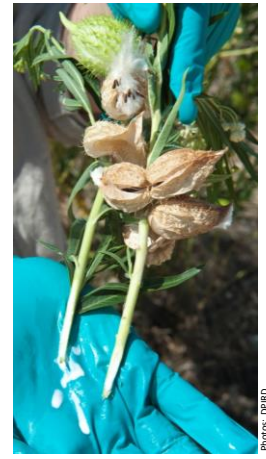


## Help map the distribution of invasive Cotton bush!

### 1 Find some cotton bush plants



Photos: DPIRD

### 2 Photograph the plant and any insects or diseases



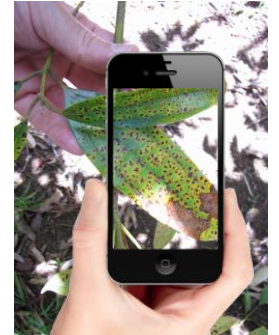
Take a photo of the infestation  
in the landscape



Take a photo of  
any flowers or  
fruits



Take a photo of  
any insects



Take a photo of  
any damaged or  
diseased plants

#### Look out for insects like...



Wanderer  
caterpillar  
(*Danaus  
plexippus*)



Oleander  
aphid  
(*Aphis nerii*)



Common  
milkweed bug  
(*Arocatus  
rusticus*)

www.brisbaneinsects.com

### 3 Report your observations using MyPestGuide™ Reporter

Cotton bush experts will automatically be notified when you have made a report.

Experts will identify the plants and insects in your photographs and reply back to you with advice.

[mypestguide.agric.wa.gov.au](http://mypestguide.agric.wa.gov.au)

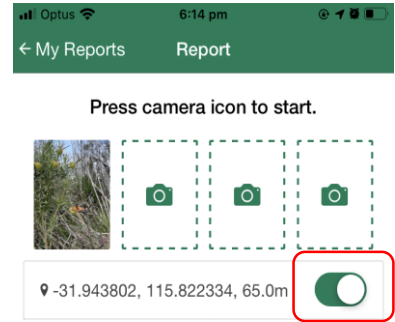
Follow the instructions below when surveying for cotton bush

- 1 Download MyPestGuide™ Reporter from the app store
- 2 Open the app on your device
- 5 Check location is turned ON

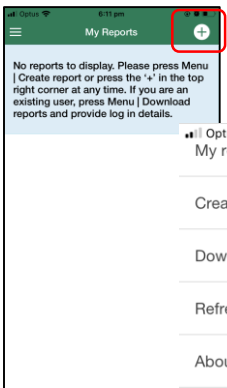


Select the **MPG™ Reporter** icon and wait for the splash screen to appear.

Close the Quick start screen or select 'Don't show again'.

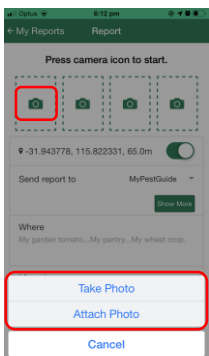


### 3 Create a report



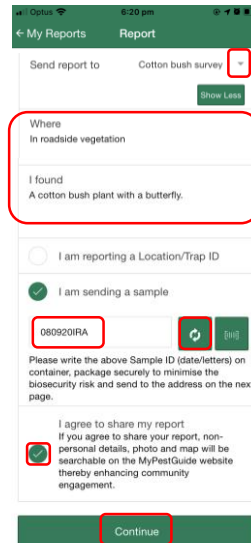
Select the '+' symbol or use the menu to start

### 4 Attach your photos



Press the camera icon to start  
Or use your device to snap a photo then share it to the app  
Take or attach up to 4 photos

### 6 Enter observation details



Select 'Cotton bush survey'

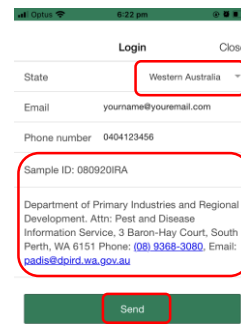
Enter the details of your observation

If collecting a sample tick 'I am sending a sample'.  
Select 'refresh' symbol to generate a sample ID and write this on your container.

Click 'I agree to share my report'

Click 'Continue'

### 7 Confirm your contact details



Select your State

Enter your Email and Phone number

Write the Sample ID on the container if sending a sample.

Click 'Send'!

### For more information contact:

Dr. Karen Bell  
[karen.bell@csiro.au](mailto:karen.bell@csiro.au)  
Phone: 08 9333 6027

Mike Christensen  
[mike.christensen@swccnrm.org.au](mailto:mike.christensen@swccnrm.org.au)  
Phone: 08 9724 2415